



Guinness Property - Empty Homes - Handover Form

8 Brush Walk, Mere, Wiltshire, BA12 6FP

Incomplete

Score	2 / 10 (20%)	Flagged items	0	Actions	0
-------	--------------	---------------	---	---------	---

Address

8 Brush Walk, Mere, Wiltshire, BA12 6FP

Works Order Number

5520832/1

Conducted on

20.09.2023 10:21 BST

Inspected By

Steve Yeomans

First Inspection Overall Rating

Good

OFFICE USE ONLY

0 / 7 (0%)

DOCS SENT ☐

SOR VALUE MATCH ☐

VP DATES ☐

GRN PO'S ☐

ASSIGN SOR'S ☐

UPDATE WB ☐

PLANCAP DOCS ☐

NOTES

Property appears in good condition, decor is good, carpets are all good, can be gifted to new tenant.

Access Details Whilst Property Void

Keysafe by communal door (carpark side), code is 1902.

COMPONENTS

DECORATIONS



All in good order.

2 BED FLAT

Lounge
All OK.

Bedroom (large).
All ok

Bedroom (small).
All OK.



Photo 1



Photo 2



Photo 3

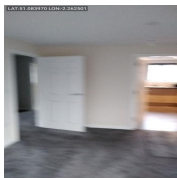


Photo 4

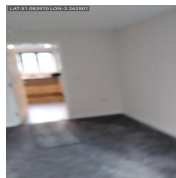


Photo 5

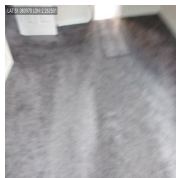


Photo 6

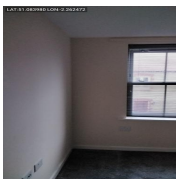


Photo 7

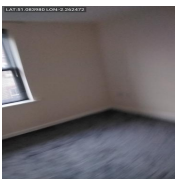


Photo 8

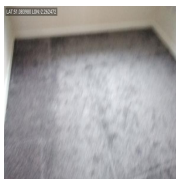


Photo 9

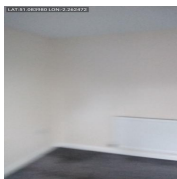


Photo 10

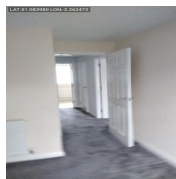


Photo 11

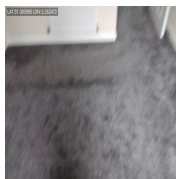


Photo 12

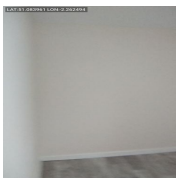


Photo 13

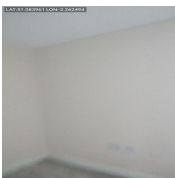


Photo 14



Photo 15

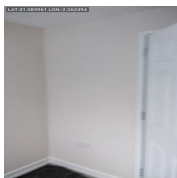


Photo 16

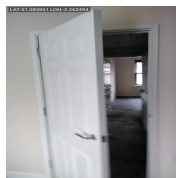


Photo 17

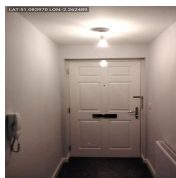


Photo 18

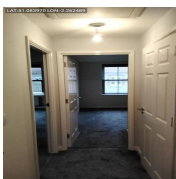


Photo 19

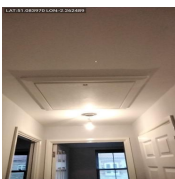


Photo 20

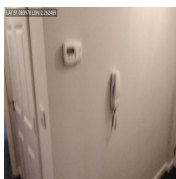


Photo 21

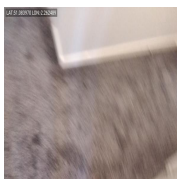


Photo 22



Photo 23

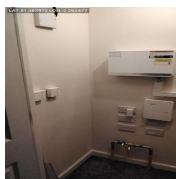


Photo 24

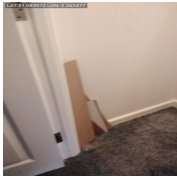


Photo 25



Photo 26

KITCHEN



Clean/service extractor

Clean/service CO2 detectors throughout.

Clean/service smoke detectors throughout

Replace sink plug/chain.

Remove any items left by previous tenant, check all cupboards/cabinets etc. Clear hallway storage cupboard of timber off cuts etc.

Ease/adjust kitchen door, will not close.

Leave blinds in window.



Photo 27

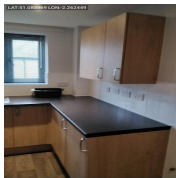


Photo 28

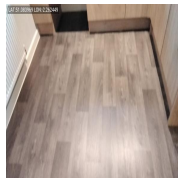


Photo 29

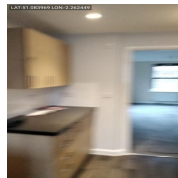


Photo 30

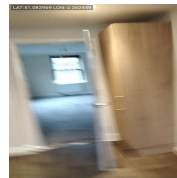


Photo 31

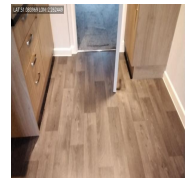


Photo 32

BATHROOM



Clean/service extractor.

Replace toilet seat/cover.

Replace basin plug/chain.

Replace bath plug/chain.

Replace shower hose and head.

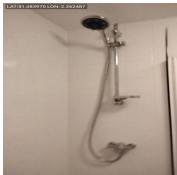


Photo 33

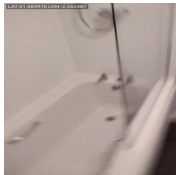


Photo 34



Photo 35



Photo 36

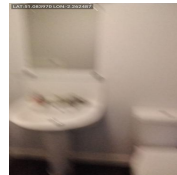


Photo 37



Photo 38

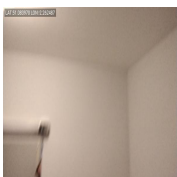


Photo 39

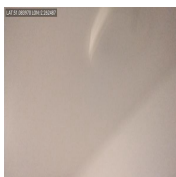


Photo 40

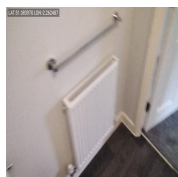


Photo 41

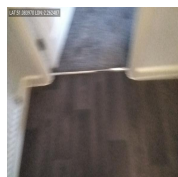


Photo 42

FRONT DOOR



Composite, all serviceable.

REAR DOOR



No rear door.

ALL WINDOWS



Done on room by room basis, all good.

QUANTUM HEATER UPGRADE



Damp & Mould in the property?

No

Electric Info

Location of Consumer Unit

In hallway store cupboard.

Add Clear Photo



Photo 43



Photo 44



Photo 45

Electric Certificate Number

Isolation Switch Fitted

Yes

Info;

Type of Meter

Smart

Add Clear Photo



Photo 46

Is it an Economy 7 Meter?

No

Is the power on at Pre Inspection?

Yes

Before Value (£)

£4.75 cr, on supply.

After Value (£)

Serial Number

19L2420387

Property Of

Macquarie Energy Leasing.

Before Readings

06000 kwh

After Readings

Gas Info

Gas In Property?

Yes

Location of Gas Meter

External in floor mounted gas box, marked no 8.

Gas Cert Number

Type of Meter

Smart

Add Clear Photo



Photo 47

Serial Number

E6 S1244454 19 61

Reading

00920.053 m3

Before Value (£)

None shown. Message saying
'Pre-Comm. ON'.

After Value (£)

British Gas Portal Updated at Stage 1 & 2

Water Info

Location Of Stop Tap

Under kitchen sink.



Photo 48

Water Meter Fitted?

No

Before Reading

After Reading

Serial Number

Loft Info

General condition of loft

Unable to access at time of visit.

Loft insulation present

BEFORE PHOTOS

AFTER PHOTOS

Number of Keys Returned

Communal door

1
From 0 to 10

Fob

0
From 0 to 10

Front Door

2
From 0 to 10

Rear Door(s)

0
From 0 to 10

Window Locks

3
From 0 to 10

Shed/Outbuilding

0
From 0 to 10

Gate Padlock

0
From 0 to 10

Meter Cupboard

1
From 0 to 10

Location Of Returned Access Key

Keysafe

Location of Keysafe

By communal door, near to carpark. Keysafe marked GP, code is 1902.

Keysafe Code

SIGN OFF

RETURNED

This property has been prepared to The Guinness Partnership
Standard Re-Let charter by Guinness Property.
It has been left in a clean state.
Dust covers have been removed from smoke/heat detectors
and are in good, working order.

OVERVIEW OF ANY DEFERRED WORKS

CUSTOMER'S GAS RECOMMISSION INSTRUCTIONS



WORKS ORDER NUMBER;

Media summary



Photo 1



Photo 2



Photo 3

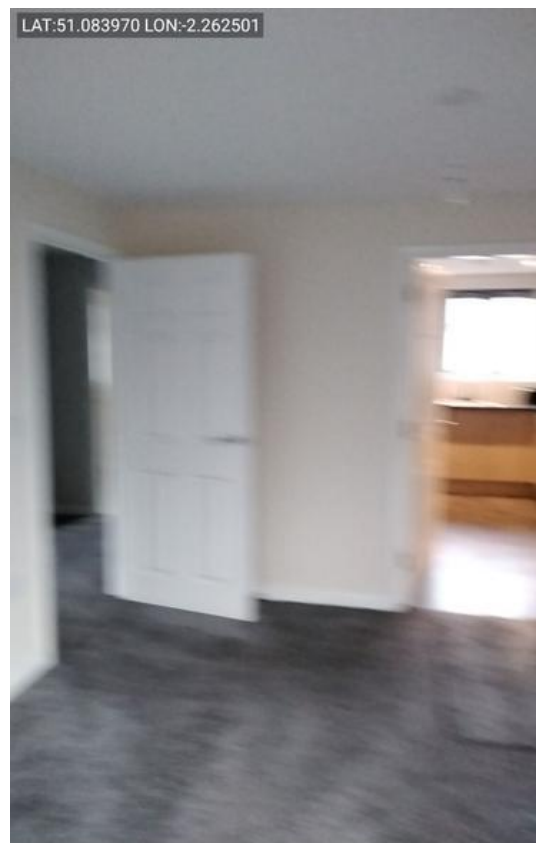


Photo 4



Photo 5



Photo 6



Photo 7



Photo 8



Photo 9

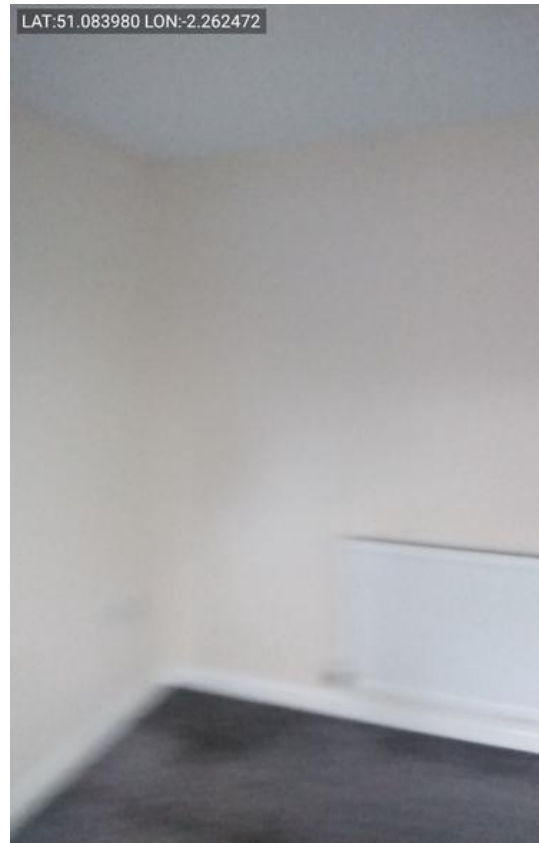


Photo 10

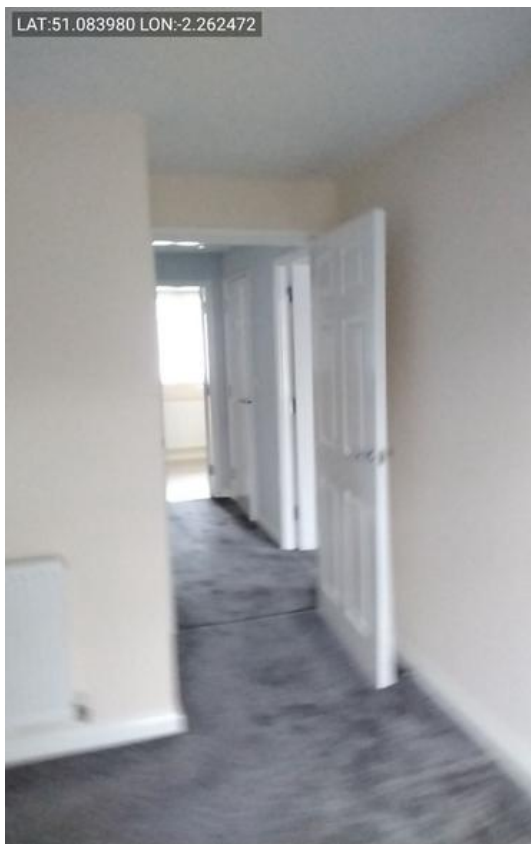


Photo 11

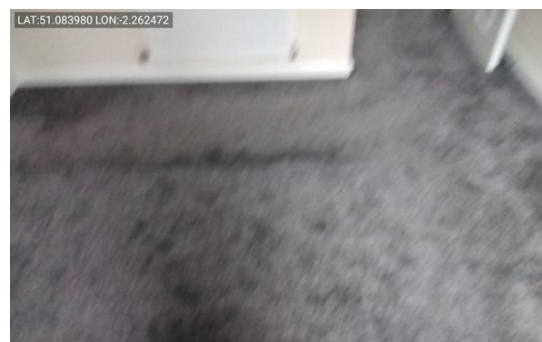


Photo 12

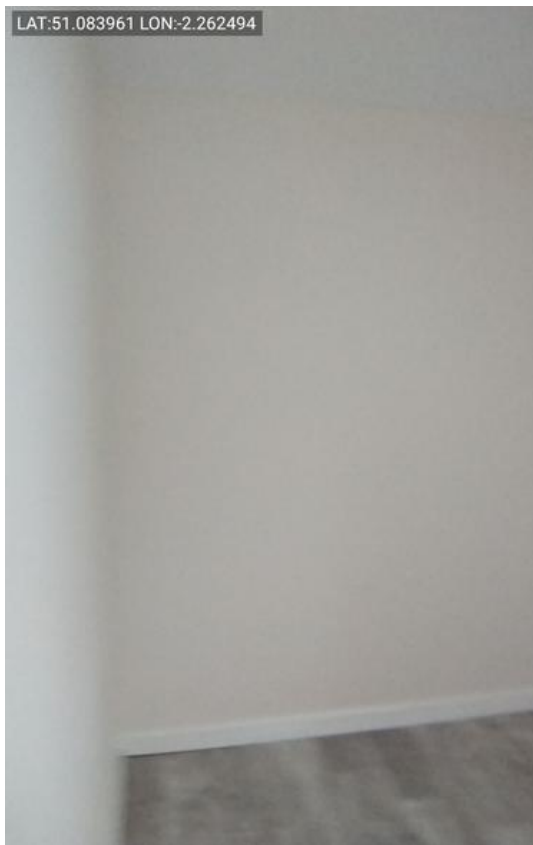


Photo 13

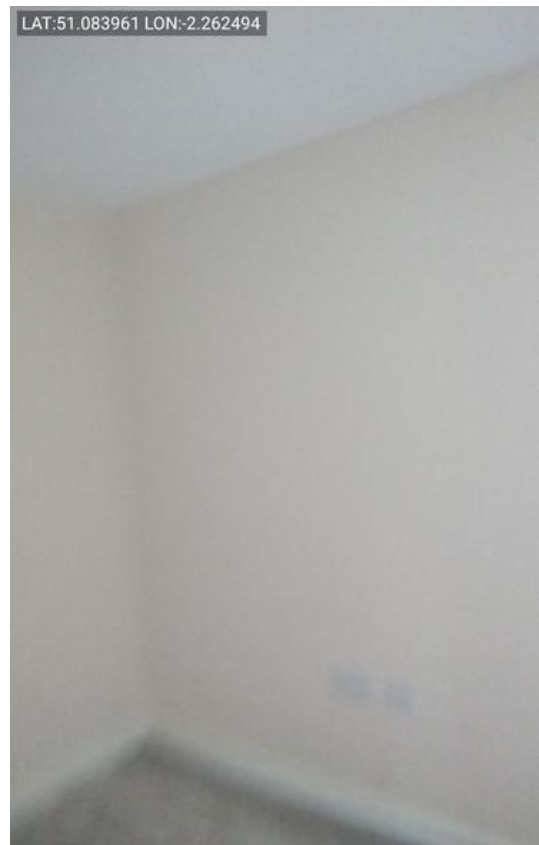


Photo 14



Photo 15

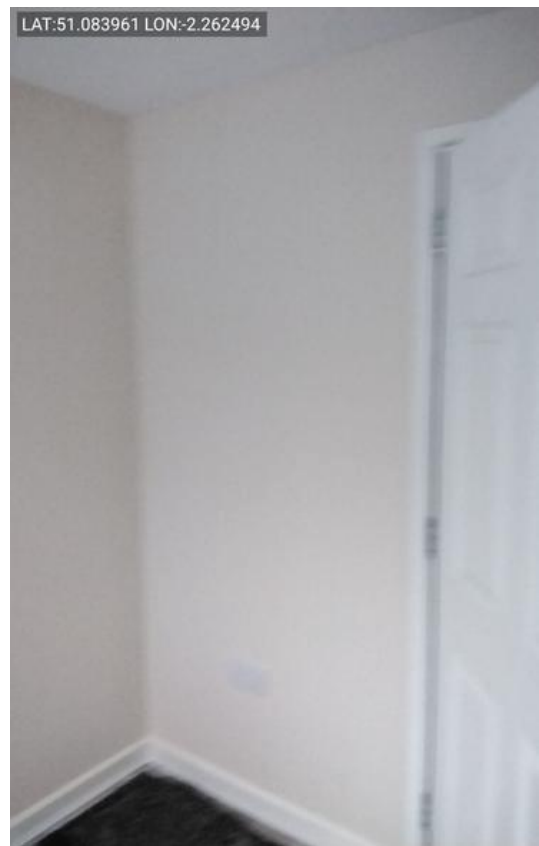


Photo 16



Photo 17

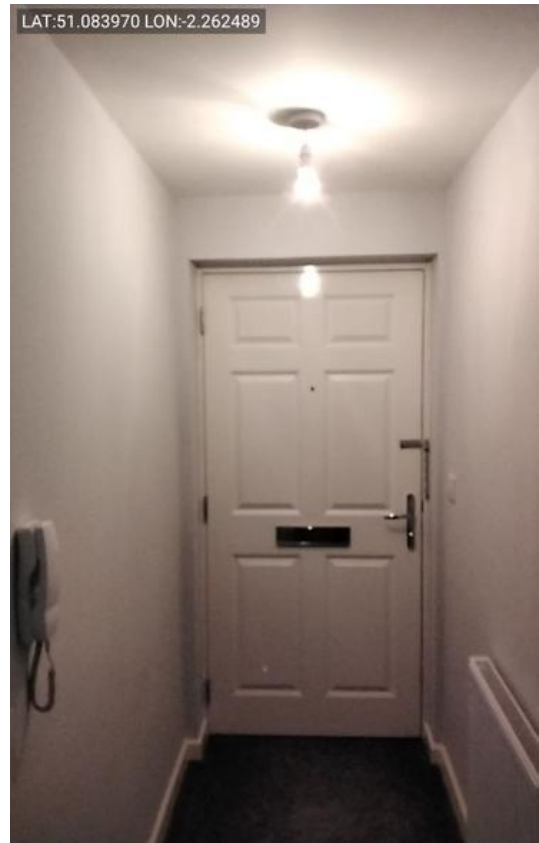


Photo 18



Photo 19



Photo 20



Photo 21

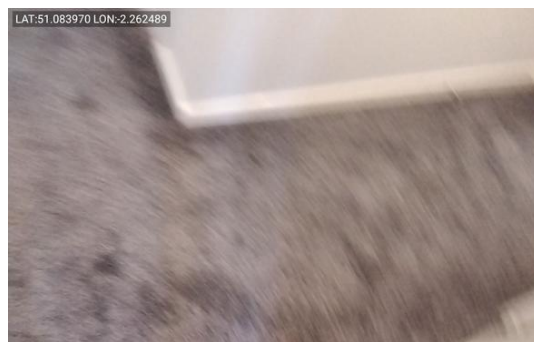


Photo 22



Photo 23



Photo 24

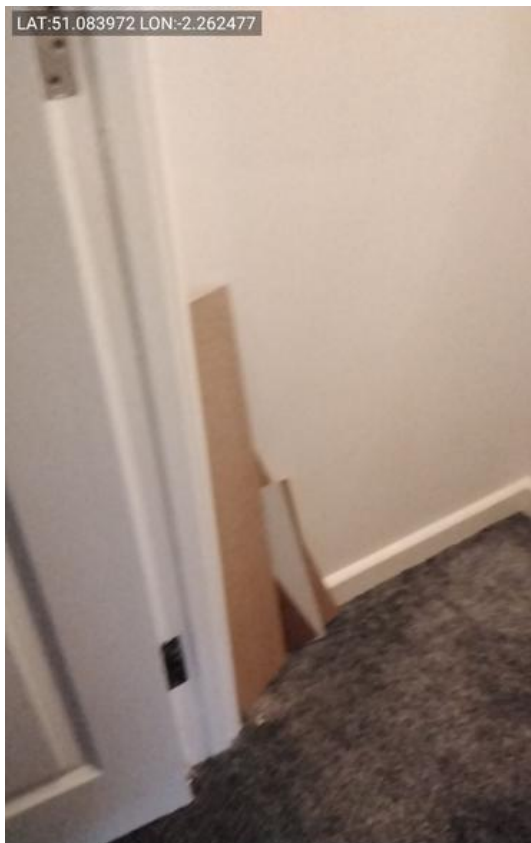


Photo 25

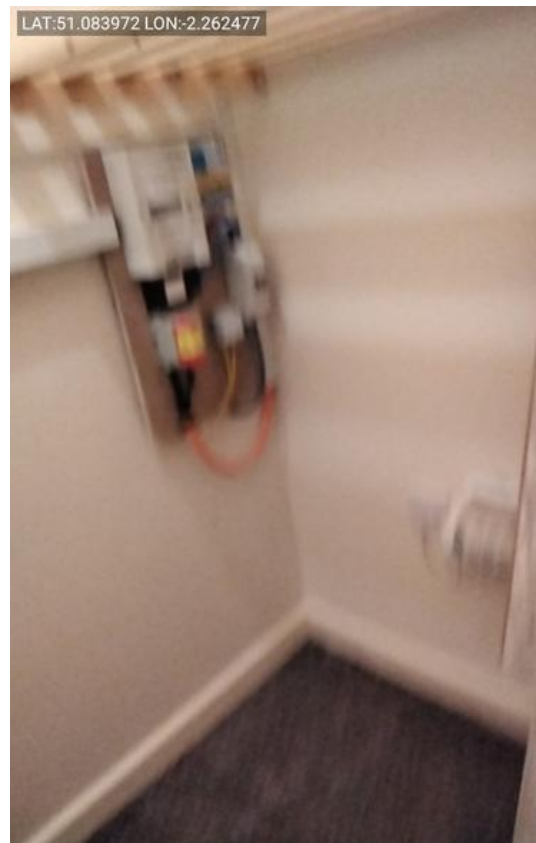


Photo 26



Photo 27



Photo 28



Photo 29

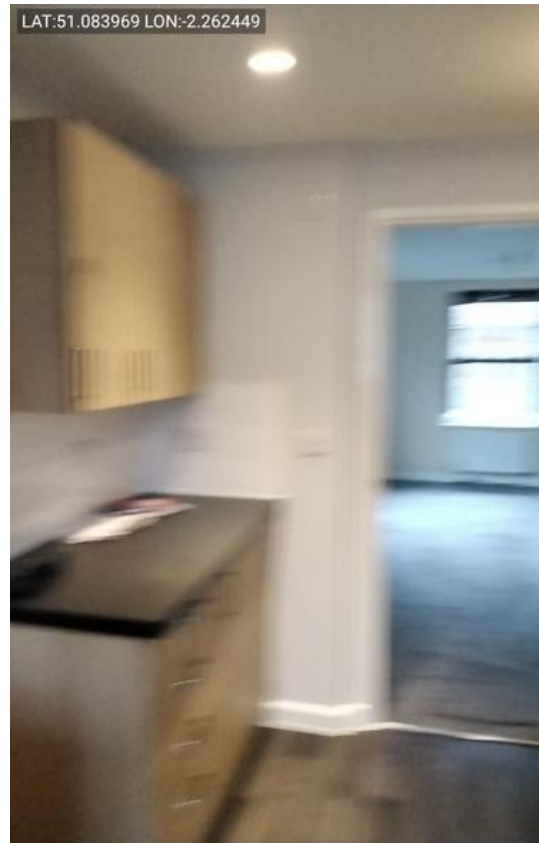


Photo 30



Photo 31



Photo 32



Photo 33



Photo 34



Photo 35

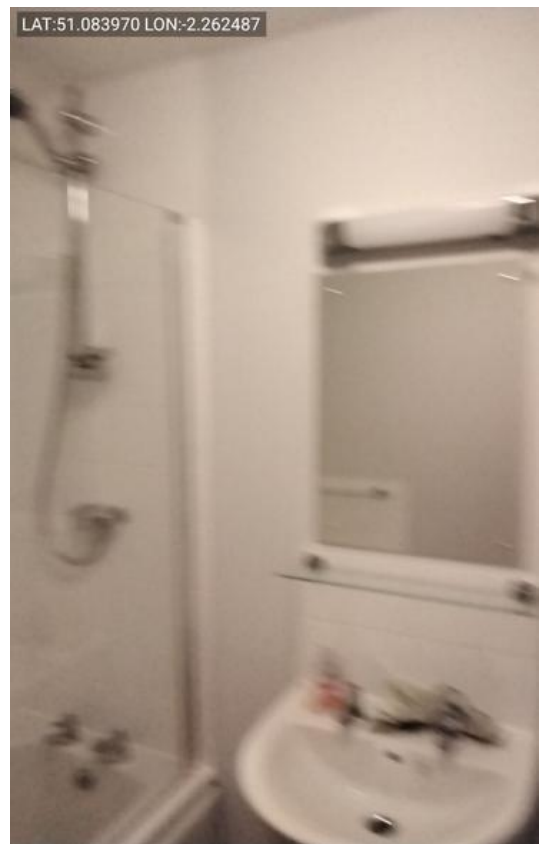


Photo 36

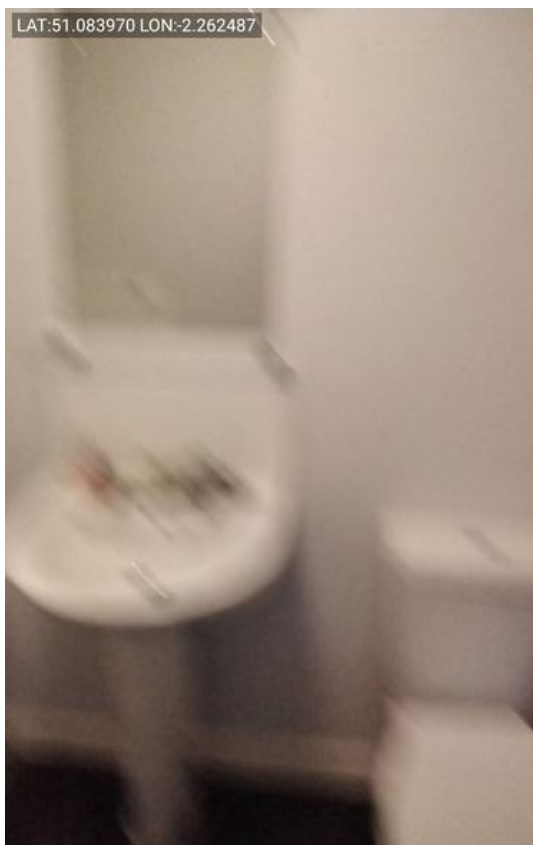


Photo 37

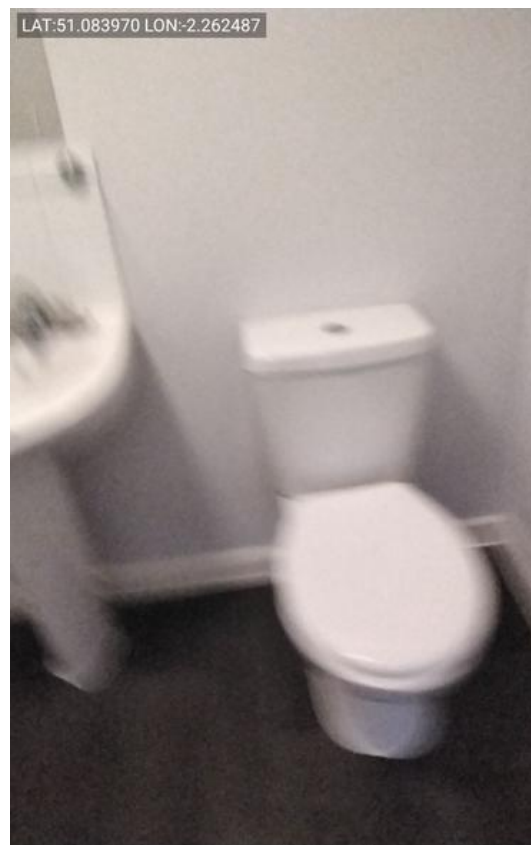


Photo 38

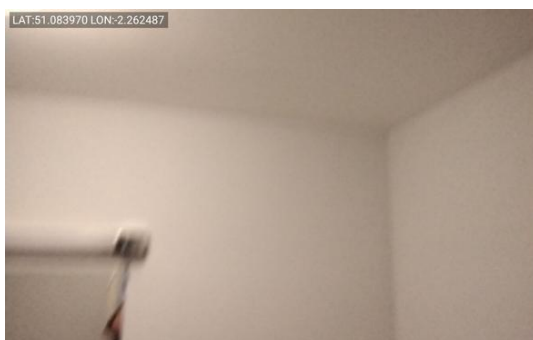


Photo 39



Photo 40

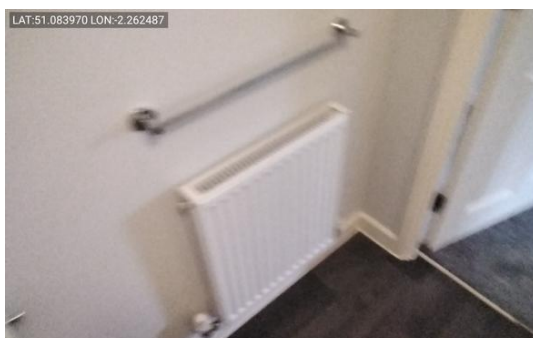


Photo 41



Photo 42



Photo 43

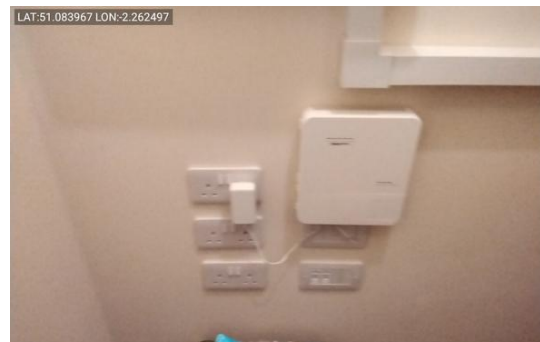


Photo 44



Photo 46



Photo 45

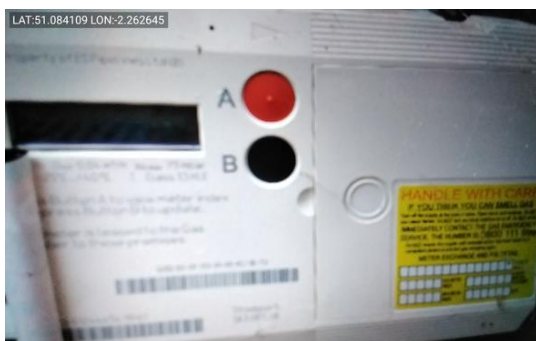


Photo 47



Photo 48