



Guinness Property - Empty Homes - Handover Form

8 Roman House, Walcot Gate, Walcot, Bath, BA1 5UE

Incomplete

Score	0 / 8 (0%)	Flagged items	0	Actions	0
-------	------------	---------------	---	---------	---

Address

8 Roman House, Walcot Gate, Walcot, Bath, BA1 5UE

Works Order Number

5528353/1

Conducted on

20.09.2023 11:36 BST

Inspected By

Gary Radford

First Inspection Overall Rating

Good

OFFICE USE ONLY

0 / 7 (0%)

DOCS SENT ☐

SOR VALUE MATCH ☐

VP DATES ☐

GRN PO'S ☐

ASSIGN SOR'S ☐

UPDATE WB ☐

PLANCAP DOCS ☐

Audit

0 / 1 (0%)

NOTES

Remove all carpets and clear some items as not much left here

Access Details Whilst Property Void

Keysafe by front door 1902

COMPONENTS

0 / 1 (0%)

DECORATIONS

☐

KITCHEN

☐

BATHROOM

☐

FRONT DOOR

☐

REAR DOOR

☐

ALL WINDOWS

☐

QUANTUM HEATER UPGRADE

☐

Damp & Mould in the property?

No

Electric Info

Location of Consumer Unit

Electric cupboard outside flat

Add Clear Photo

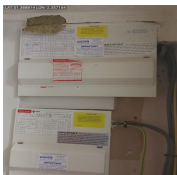


Photo 1



Photo 2

Electric Certificate Number

Isolation Switch Fitted

Yes

Info;

Type of Meter

Quarterly

Add Clear Photo



Photo 3

Is it an Economy 7 Meter?

Yes

Is the power on at Pre Inspection?

Yes

Before Value (£)

After Value (£)

Serial Number

L020 L73D03132



Photo 4

Property Of

EDF

Before Readings

65639

42736



Photo 5

After Readings

Gas Info

Gas In Property?

No

Location of Gas Meter

Gas Cert Number

Type of Meter

Add Clear Photo

Serial Number

Reading

Before Value (£)

After Value (£)

British Gas Portal Updated at Stage 1 & 2

Water Info

Location Of Stop Tap

Hallway cupboard

Water Meter Fitted?

No

Before Reading

After Reading

Serial Number

Loft Info

General condition of loft

N/A

Loft insulation present

BEFORE PHOTOS

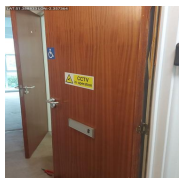


Photo 6

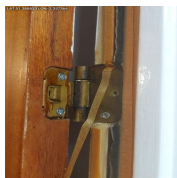


Photo 7

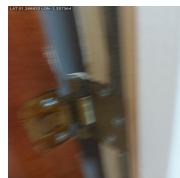


Photo 8



Photo 9



Photo 10



Photo 11



Photo 12



Photo 13

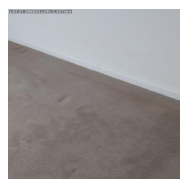


Photo 14

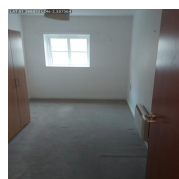


Photo 15

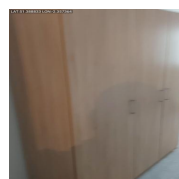


Photo 16

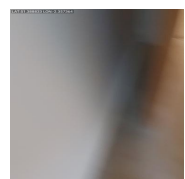


Photo 17



Photo 18



Photo 19

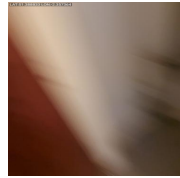


Photo 20



Photo 21



Photo 22

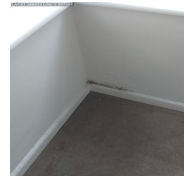


Photo 23

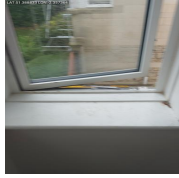


Photo 24

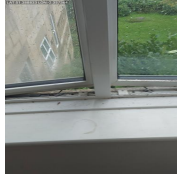


Photo 25

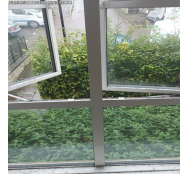


Photo 26

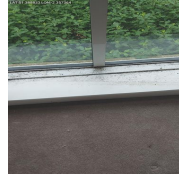


Photo 27



Photo 28

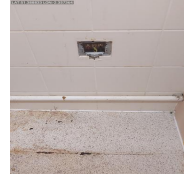


Photo 29



Photo 30



Photo 31



Photo 32

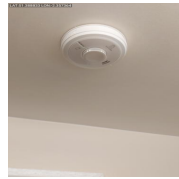


Photo 33



Photo 34



Photo 35



Photo 36



Photo 37



Photo 38



Photo 39



Photo 40

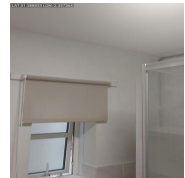


Photo 41

AFTER PHOTOS

Number of Keys Returned

Communal door

0
From 0 to 10

Fob

0
From 0 to 10

Front Door

0
From 0 to 10

Rear Door(s)

0
From 0 to 10

Window Locks

0
From 0 to 10

Shed/Outbuilding

0
From 0 to 10

Gate Padlock

0
From 0 to 10

Meter Cupboard

0
From 0 to 10

Location Of Returned Access Key

SIGN OFF

RETURNED

**This property has been prepared to The Guinness Partnership
Standard Re-Let charter by Guinness Property.
It has been left in a clean state.
Dust covers have been removed from smoke/heat detectors
and are in good, working order.**

OVERVIEW OF ANY DEFERRED WORKS

CUSTOMER'S GAS RECOMMISSION INSTRUCTIONS



WORKS ORDER NUMBER;

Media summary



Photo 1



Photo 2



Photo 3



Photo 4



Photo 5



Photo 6



Photo 7



Photo 8



Photo 9



Photo 10



Photo 11



Photo 12



Photo 13



Photo 14



Photo 15



Photo 16

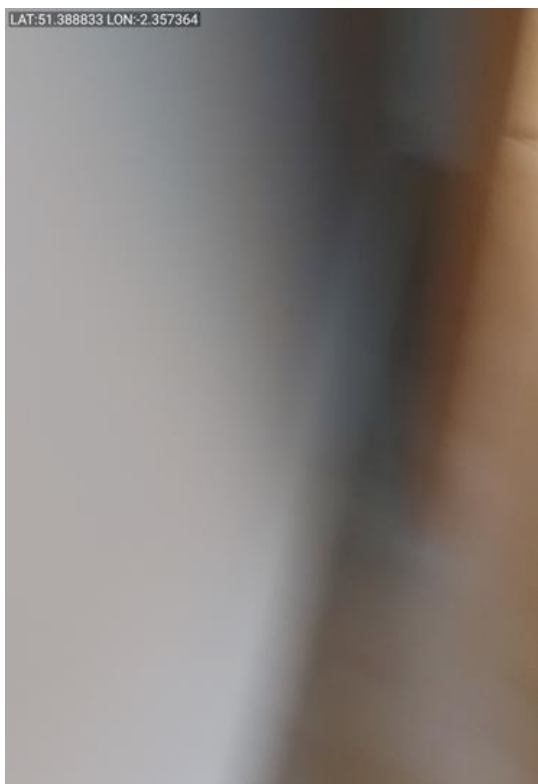


Photo 17

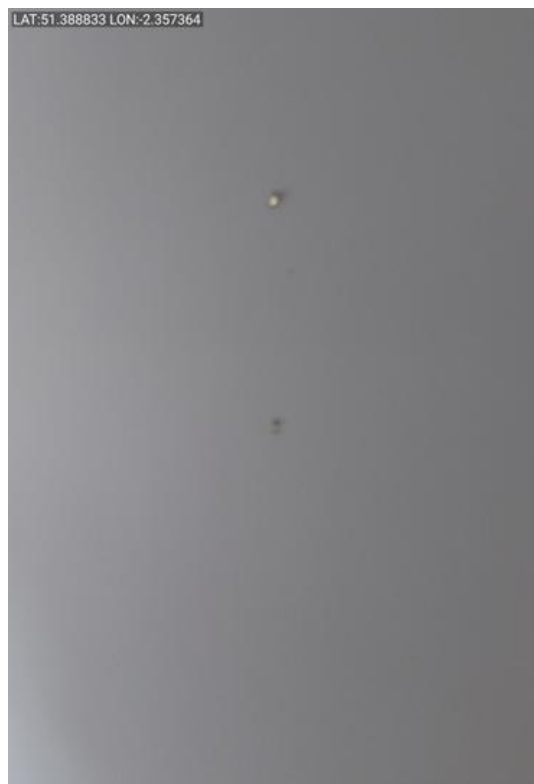


Photo 18

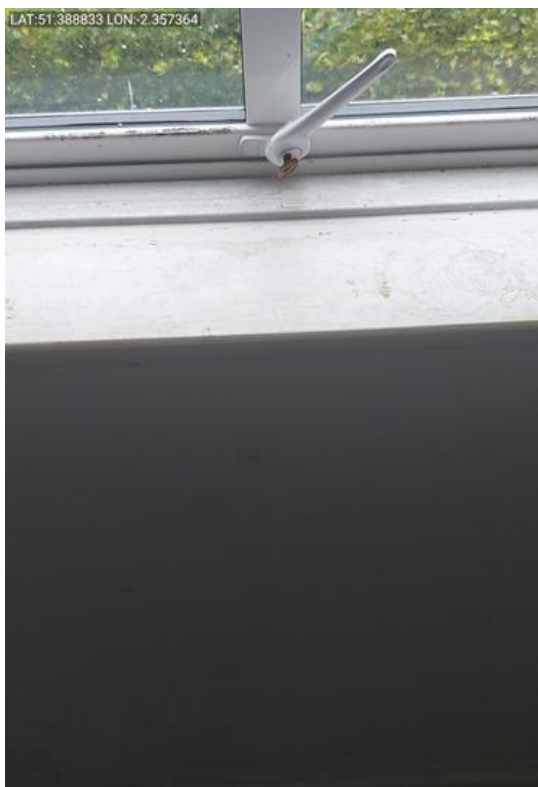


Photo 19

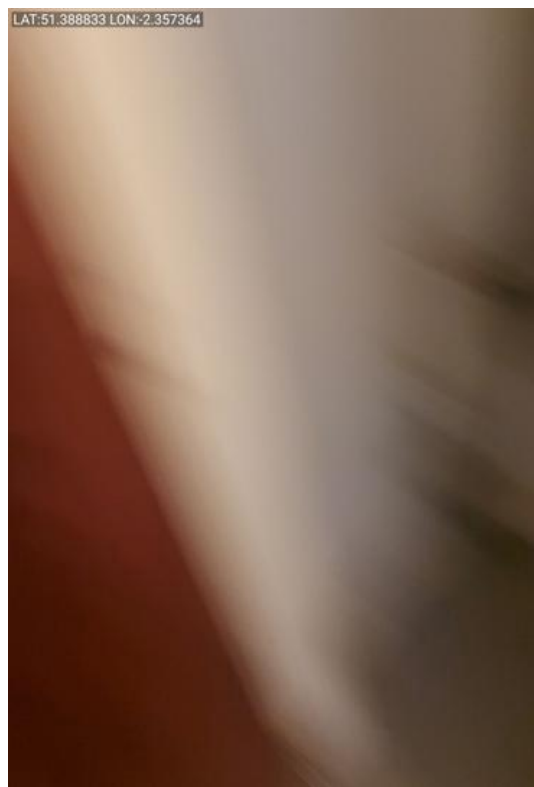


Photo 20



Photo 21



Photo 22



Photo 23



Photo 24



Photo 25



Photo 26



Photo 27



Photo 28



Photo 29



Photo 30



Photo 31



Photo 32



Photo 33



Photo 34



Photo 35



Photo 36



Photo 37



Photo 38



Photo 39



Photo 40



Photo 41